

EF-D-MX4TS7-C Blast Chill only Refrigeration System

Standard Features

- Control panel, electrical box, evaporator block and air deflector
- 7" ergonomic touch screen with large keys for ease of use
- User friendly operation with easy to use functions:
 - Hard or soft chill mode
 - Easy switch to probe or timer mode
 - Self Adaptive intelligent chilling mode
- Auxiliary functions: ice cream hardening, ventilated drying, multiple timers, customisable multiple phases, raw fish sanitation
- 40 program cycles with favourites key – shortcuts to last 9 programs used
- Friginox refrigeration system includes, control panel, electrical box, evaporator, air deflector, expansion and solenoid valves, drip trays and piping
- Pre-chilling cycle key to maximise efficiency
- Automatic hold mode after each cycle
- Manual defrosting with automatic control of time
- Multi-point core temperature probe
- Timer mode or continuous run
- Automatic fan stop when opening the door
- Pre-wired electrical box with connection terminal
- Fixing of the evaporator on a vertical wall
- Supply of accessories for fixing the evaporator on a vertical wall (isothermal panels), with injected polyurethane foam. For other panel types please advise for specific fittings
- **** All external panels to be supplied by contractors ****
- Assembly required

Please refer to Moffat price list for options and accessories

Technical data

Recommended internal room dimensions	W 900mm x D 1440mm x H 1885mm
Load Capacity	320kg chill / 150kg freeze*
Electrical Connections	3P+N+E, 400-415V, 50/60Hz, 20A, 7.3kW
Waste	Provide for a water runoff & trap
Nett weight	195kg
De-icing waste runoff tray and pipework not included, to be supplied by panel installer	
Remote condensing unit version (remote condensing unit not included)	
Refrigerant type R452A (other gas types available upon request)	
Condensing capacity upright Blast Chiller 14kW / 20.5kW / 31kW for the respective evaporation temperatures of -20/-10/0°C	
Remote condensing unit with pump down control	

* Note – Load capacities may vary depending on the thermal conductivity of the food being chilled, the thickness of product and container used

Australia
moffat.com.au

Moffat Pty Limited
740 Springvale Road
Mulgrave
Victoria 3170
Australia
Telephone +613-9518 3888
Facsimile +613-9518 3833
vsales@moffat.com.au

New Zealand
moffat.co.nz

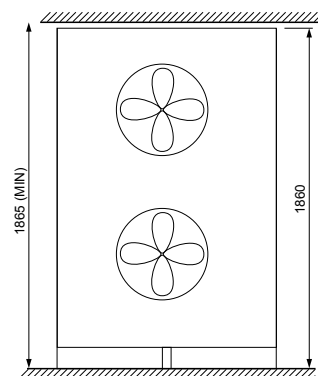
Moffat Limited
45 Illinois Drive
Izone Business Hub
Rolleston 7675
New Zealand
Telephone +64 3-983 6600
Facsimile +64 3-983 6660
sales@moffat.co.nz

Disclaimer: All unit capacities are based on subjective testing. Moffat accepts no liability for production values. In line with policy to continually develop and improve its products, Moffat Limited reserves the right to change specifications and design without notice.

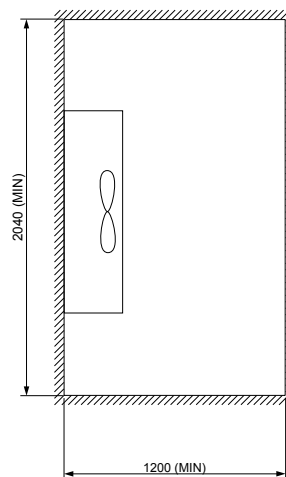
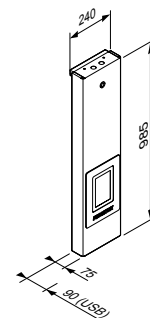
© Copyright Moffat Ltd
AN-FRI-S-2501



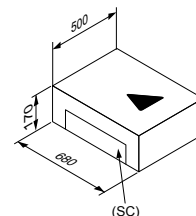
Dimensions



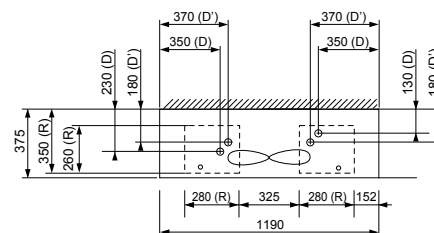
Control panel



Electrical box



(MIN) Minimum
(D) 5/8" liquid line connection
(D') 1" 1/8 suction line connection
(R) Cables and pipe output
(SC) Electric cables output
(USB) With USB option



an Ali Group Company



The Spirit of Excellence