

TempoTronic

Models:

TempoTronic: 3L, 5L, 7.5L, 15L, 25L

TempoTronic + Timer: 3L, 5L



Contents

WARNINGS & PRECAUTIONS	3
Technical specification	5
Step 1 – Positioning	6
Step 2 – Fastening	7
Step 3 – Plumbing connection	8
Step 4 – Electrical connection	9
Step 5 – Assembly	10
Step 6 – Commissioning	11
Tap operation	12
Timer operation	13
Troubleshooting	18
Spare parts	19
Cleaning	20
End of life disposal	20

WARNINGS & PRECAUTIONS



Safety

This appliance is not intended for use by persons (including children) with reduced physical, sensory or mental capabilities, or lack of experience and knowledge, unless they have been given supervision or instruction concerning use of the appliance by a person responsible for their safety. For products sold in Europe, this appliance can be used by children aged from 8 years and above and persons with reduced physical, sensory or mental capabilities or lack of experience and knowledge if they have been given supervision or instruction concerning use of the appliance in a safe way and understand the hazards involved. Children should be supervised to ensure that they do not play with the appliance. Cleaning and user maintenance shall not be made by children without supervision.

Qualifications

If the power cable is damaged it must be replaced by a qualified technician. To avoid hazards, all installation procedures must be carried out by a suitably qualified tradesperson.

Venting

Occasionally steam and / or boiling water may discharge through a vent outlet or the tap. Ensure the tap body is located so the tap outlet safely dispenses into the drip tray or sink bowl area, and the vent is plumbed to a safe location.

Lifting

Take care when lifting. The appliance may exceed safe lifting limits. If you feel this is beyond your personal capabilities, please seek assistance with the lift. Do not lift the appliance by the tap or any of its connections. Refer to the Technical specification for the weight of the product.

Positioning

Ensure the appliance is positioned in an accessible area. The appliance must be installed upright, with its base in a horizontal position.

Frost protection

If the appliance is located where ambient air temperature could fall below 5°C when the appliance is not in use, do not turn it off electrically. This safeguard does not offer the same protection to the connecting pipework and fittings.

WARNINGS & PRECAUTIONS

1. Please read all Warnings and Precautions, Installation Requirements and Installation Instructions before installing this appliance. Never attempt to install the appliance without reading all of the applicable instructions.
2. All plumbing and electrical connections must be made in accordance with local regulations and relevant standards including Plumbing standard AS/NZS 3500 and Electrical Wiring Rules AS/NZS 3000.
3. The power cord and general power outlet must be in a safe and accessible position after installation.
4. Any disconnection to the fixed wiring must be in accordance with local regulations and relevant standards including AS/NZS 3000.
5. This appliance must be earthed. The resistance of the earth connection from each exposed metal part must be less than 1 ohm.
6. The installer is responsible to supply and install all valves as required by local regulations and relevant standards.
7. All installation and service work must be completed by trained and suitably qualified tradespeople. Faulty operation due to unqualified persons working on the product may void warranty coverage.
8. Do not remove the cover of the appliance under any circumstances without first isolating the appliance from the power supply.
9. In hard water areas where mineral scale accumulation may become a problem, consideration should be given to the maintenance required. A suitable form of water treatment may be necessary.
10. This appliance must operate within ambient temperatures of 5°C - 50°C.
11. This appliance is designed for indoor use and must not be installed outdoors or exposed to the elements of nature.
12. Do not clean this appliance with a water jet. Do not position this appliance in an area that may be cleaned by a water jet.
13. This appliance is intended to be used in: staff kitchen areas in shops, offices and other working environments; farm houses and by clients in hotels, motels and other residential type environments; bed and breakfast type environments; catering and similar non-retail applications.
14. Due to the process of continuous improvement, Birko reserves the right to change details mentioned in this manual, without notice. Visit birko.com to ensure you have the latest copy of this document.

Technical specification

Tank size (litres)	Heat up time		Rated voltage and power	Dimensions W x D x H (mm)	Filled weight (kg)
	Inlet 15°C	Inlet 10°C			
3.0	16mins	17mins	220-240V, 50Hz, 1400W 220V, 60Hz, 1250W	289 x 180 x 431	12.5
5.0	16mins	17mins	220-240V, 50Hz, 2200W 220V, 60Hz, 2000W	318 x 198 x 465	16.5
7.5	23mins	23mins	220-240V, 50Hz, 2200W 220V, 60Hz, 2000W	318 x 198 x 578	20.5
15.0	40mins	43mins	220-240V, 50Hz, 2800W 220V, 60Hz, 2500W	390 x 299 x 600	34.5
25.0	47mins	50mins	220-240V, 50Hz, 2800W 220V, 60Hz, 2500W	390 x 299 x 780	47.0

Before installation, ensure that:

- All technical specifications and instructions have been reviewed and understood.
- The mounting wall can support the product weight when full of water. See Technical specifications.
- Sufficient space is provided to install the appliance and other components in accordance with these installation instructions. Check cable and plumbing against inlet /outlet positions before proceeding.
- An easily accessible, 220-240V AC 50-60Hz socket and double pole isolation switch (correctly rated for the appliance) is required.
- The appliance must be connected to a potable water supply with working pressure of 150 - 700 kPa (1.5 - 7.0 bar), with isolating valve within reach of the hose and positioned so that the valve will not be obstructed.
- A 350 kPa (3.5 bar) pressure limiting valve (not supplied) must be fitted if the incoming mains water pressure is likely to exceed 500 kPa (5.0 bar)
- The appliance must be placed upright with its base in a horizontal position.



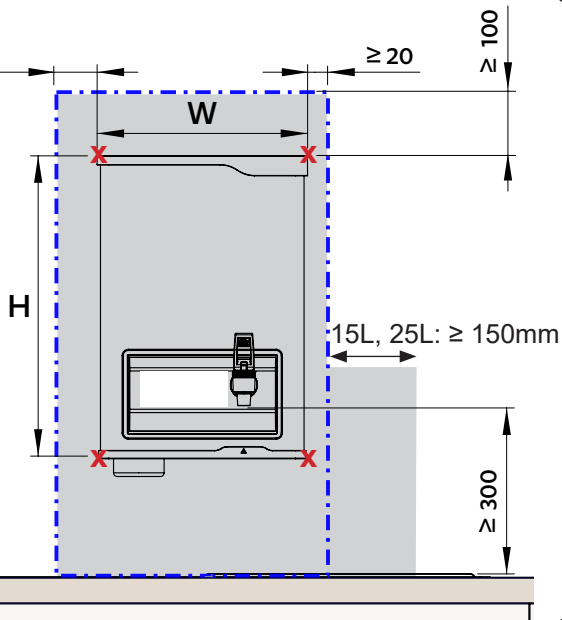
IMPORTANT! Do not proceed with the installation if these requirements are not met.

Step 1 – Positioning

1.1

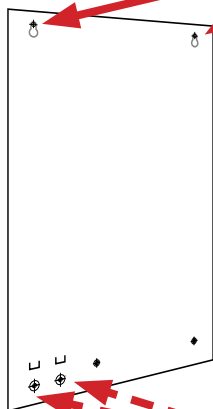
3L, 5L, 7.5L: $\geq 65\text{mm}$
15L, 25L: $\geq 150\text{mm}$

Mark corners of the appliance on the wall.



1.2

Place supplied paper template on the wall.
Drill holes as shown.

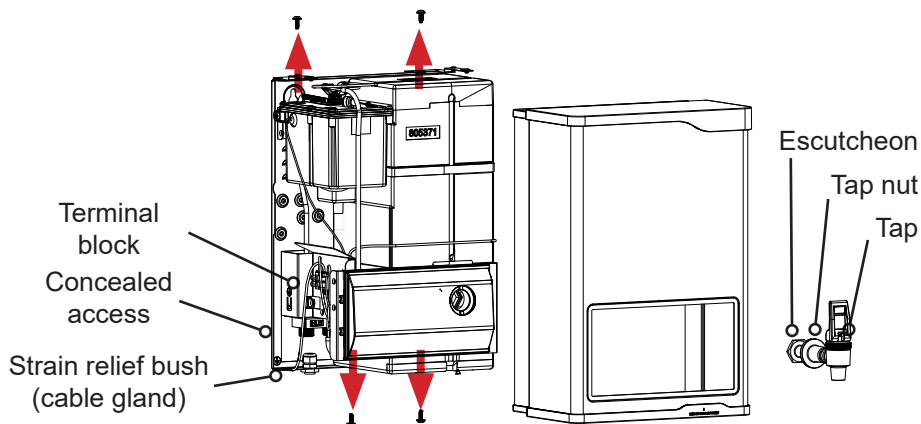


OPTION: Drill holes for concealed plumbing
(water inlet, vent outlet) and electrical.

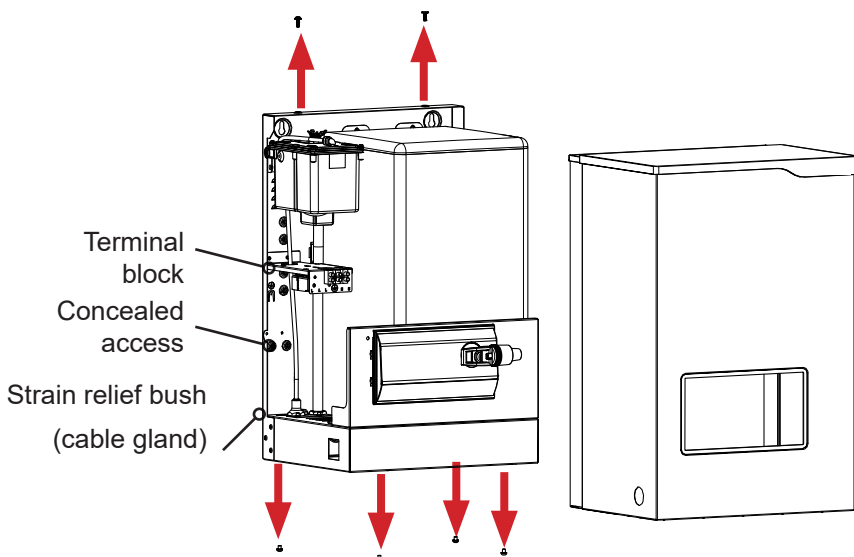
Step 2 – Fastening

- 2.1** Remove the case screws. Remove the cover.
Use supplied wall screws to mount the appliance to the wall.

3 - 7.5 litre models



10 - 25 litre models



Step 3 – Plumbing connection

Cold water inlet

IMPORTANT:

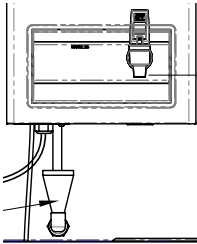
Cold water pipes must be flushed before connection to the inlet to prevent blockages from affecting operation of the appliance.

An isolation valve (not supplied) must be fitted to the water supply.

All Vent pipework:

- must be installed with continuous fall.
 - must be no more than 3 metres in length.
 - must have no more than 3 right-angle bends.
-

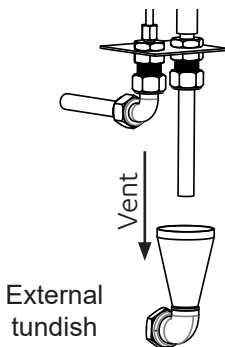
3.1



Exposed plumbing connection

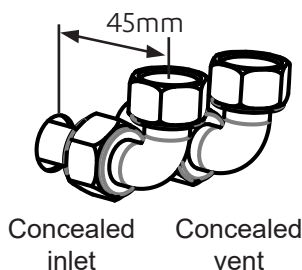
Connect the cold water inlet pipe from the base of the Hydroboil directly to the 12.7mm ($\frac{1}{2}$ " BSP) compression fittings with nuts and olives supplied.

install a visible tundish and plumb to trapped waste. Ensure access for filter replacement is not obstructed.



OR

3.2



Concealed plumbing connection

Connect cold water pipe through the rear of the appliance using a 12.7mm (1/2" BSP) capillary elbow (e.g. No.63, loose nut elbow).

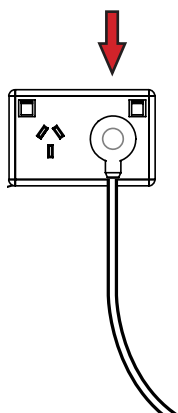
Connect vent from the concealed rear of the appliance to a dia12.7mm pipe. Vent outlet must be visible and discharge to a waste water drain.

Step 4 – Electrical connection



All wiring must be performed by a qualified electrician. Refer to local relevant electrical codes and guidelines for installation requirements, cable size and selection to ensure suitability for local installation conditions and your product's power rating.

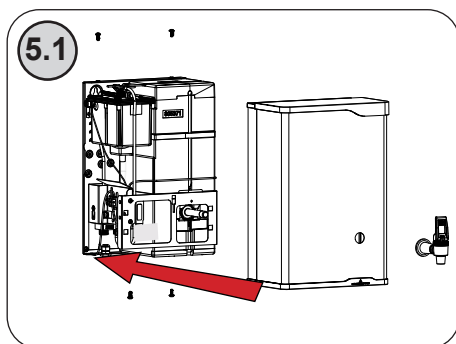
4.1



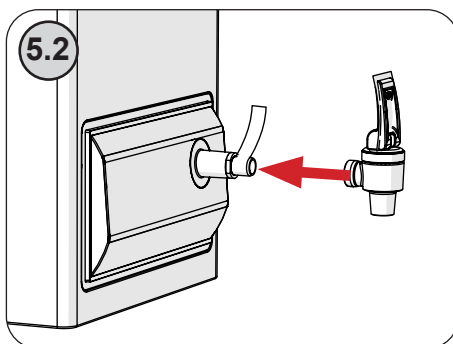
Connect the cable plug to a 220-240V AC power outlet.

Do not turn power ON until the TempoTronic can dispense water from the tap outlet.

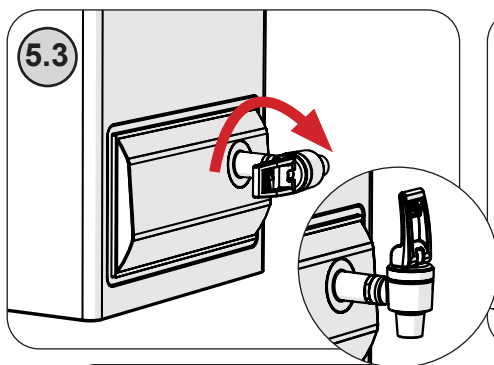
Step 5 – Assembly



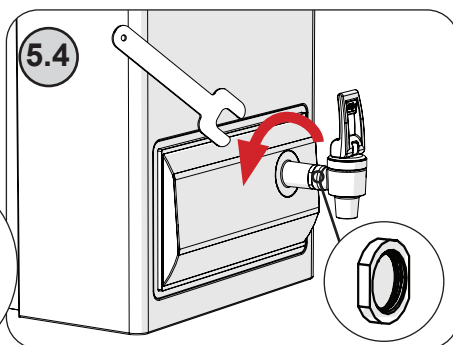
Refit cover. Fix with screws, top and bottom.



Apply thread tape to thread.



Turn tap until it touches the lock nut and is upright.



Use spanner (supplied) to tighten the lock nut.

Step 6 – Commissioning

6.1



Warning: This appliance must be earthed

Do not turn ON electrical power until instructed. Water must be available from the tap outlet to prevent damage. Water dispensed during commissioning may be boiling.

Check earthing



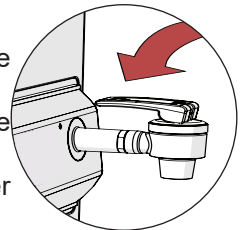
Earthing continuity must be tested by a qualified technician using a resistance meter of minimum accuracy of 5% full scale deflection.

- Ensure electrical power is OFF.
- Verify meter ohms range, connect leads together, reading should be 0 ohms.
- Hold one test lead to the earth of the power lead.
- Hold the other test lead on a cover fixing screw, then the tap.
- Verify that in every instance the electrical resistance does not exceed 1 ohm.

6.3

Check water connections

Turn ON the mains water supply. Water will flow into the TempoTronic. Check connections and repair any leaks. Depress the tap lever into the locked open position. Allow the tank to fill until water flows from the tap outlet. Once water is available from the tap, close the tap to stop water flow.



6.4

Turn ON electrical power

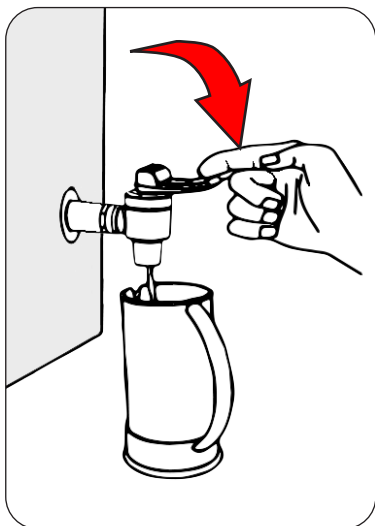
Boiling Calibration will commence. The tank will fill and heat. Allow 15-30 minutes for the water to reach boiling set temperature.

Tap operation

The TempoTronic is fitted with a two-way, cool-touch tap.



Boiling water will be dispensed



Press lever to dispense boiling water.



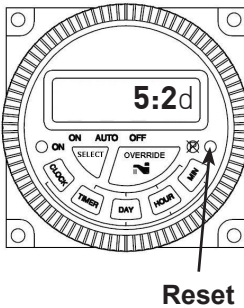
Push to lock for continuous flow.
If lever does not lock, rotate it 180°
before dispensing.

Timer operation (Timer models)

Ensure the timer is showing “5:2d”. If this is not shown, the Lithium battery will need to be replaced or the battery isolation strip has not been removed.

To access the control panel, remove the clear plastic dust cover from the front of the timer.

NOTE: Always reattach the clear plastic dust cover on the timer after making any changes.



1. Set program mode

This function is for user to customise unit ON/OFF time.

Press DAY button to select the preferred program mode then press SEL button to select the appropriate program mode. There are three program modes available:

- 5:2d mode: set ON / OFF time separately for 2 period (Mo-Fr and Sa-Su);
- 24H mode: set ON / OFF time for individual day (Mo, Tu, We, Th, Fr, Sa, Su);
- 7D mode: set ON / OFF time for all days (Mo-Su).

See tables below for the available settings in each mode.

NOTE: Once a program mode has been selected, it can only be changed by resetting the timer using the reset button.

2. Set time mode

Press the CLOCK button to toggle between 24 hour (24H) or 12 hour (12H) time display formats. Press the SEL button to confirm the time display settings.

3. Set day and time

Set day: Press and hold the CLOCK button and then press DAY button to select current day of a week.

Set hour: Press and hold the CLOCK button and then press HOUR button until the correct hour is displayed.

Set minute: Press and hold the CLOCK button and then press MIN button until the correct minute is displayed.

5:2d mode

Prog	M0-FR	SA-SU
1 _{ON}	--:--	--:--
1 _{OFF}	--:--	--:--
2 _{ON}	--:--	--:--
2 _{OFF}	--:--	--:--
3 _{ON}	--:--	--:--
3 _{OFF}	--:--	--:--
4 _{ON}	--:--	--:--
4 _{OFF}	--:--	--:--
5 _{ON}	--:--	--:--
5 _{OFF}	--:--	--:--

7D mode

Prog	M0-SU
1 _{ON}	--:--
1 _{OFF}	--:--
2 _{ON}	--:--
2 _{OFF}	--:--
3 _{ON}	--:--
3 _{OFF}	--:--
4 _{ON}	--:--
4 _{OFF}	--:--
5 _{ON}	--:--
5 _{OFF}	--:--

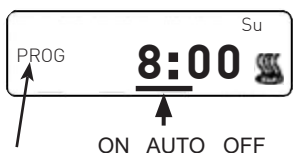
24H mode

PROG	M0	TU	WE	TH	FR	SA	SU
1 _{ON}	--:--	--:--	--:--	--:--	--:--	--:--	--:--
1 _{OFF}	--:--	--:--	--:--	--:--	--:--	--:--	--:--
2 _{ON}	--:--	--:--	--:--	--:--	--:--	--:--	--:--
2 _{OFF}	--:--	--:--	--:--	--:--	--:--	--:--	--:--
3 _{ON}	--:--	--:--	--:--	--:--	--:--	--:--	--:--
3 _{OFF}	--:--	--:--	--:--	--:--	--:--	--:--	--:--
4 _{ON}	--:--	--:--	--:--	--:--	--:--	--:--	--:--
4 _{OFF}	--:--	--:--	--:--	--:--	--:--	--:--	--:--
5 _{ON}	--:--	--:--	--:--	--:--	--:--	--:--	--:--
5 _{OFF}	--:--	--:--	--:--	--:--	--:--	--:--	--:--

Fig.a Cursor at ON position

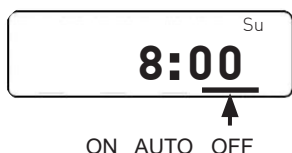


Fig.b Cursor at AUTO position ON period

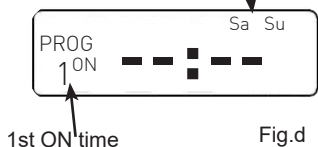


"PROG" is displayed on screen when AUTO mode is selected.

Fig.c Cursor at OFF position



This indicates the program is set to 5:2d mode and in the Sa-Su period.




4. Set timer operation mode

To select the timer operation mode: Press SEL button to toggle through ON/AUTO/OFF modes as indicated by the cursor at the bottom of the display screen (see Fig.a - Fig.c).

ON: Permanently on

AUTO: Selected timer mode

OFF: Permanently off

When timer is set to ON, the symbol  will be displayed.

There is no default program schedule.

Set Program Period:

Press TIMER button. "PROG 1ON" is displayed. To set the time for the unit to turn on, press the DAY button to scroll through Mo~Fr, Sa and Su (5:2d mode), or Mo~Tu~We~Th~Fr~Sa~Su (24H mode) or Mo~Su (7D mode). Press HOUR and MIN buttons respectively until required time is reached.

To set the time for the unit to turn off, press TIMER button and "1OFF" will be displayed. Press HOUR and MIN buttons respectively to set the turn off time.

To set the next ON/OFF time, press the TIMER key until "2ON" is displayed.

Follow the same instructions as above to set the ON/ OFF time.

If multiple ON/OFF times are required, the above steps need to be repeated. The timer can be programmed a maximum of 5 ON/OFF times per day.

During the program setting procedure, the timer will return to the default display without saving any recent changes if no buttons are pressed within a 15 second period.

To review the set program, press the TIMER button and the settings will be displayed on the screen.

Manual Override

The Manual Override function interrupts the ON/OFF status of the timer.

Press the OVERRIDE button once to select 1 hour override. "1 hr" will be displayed on the screen (see Fig.e). Press the OVERRIDE button again within 2 seconds to increase the override time to 2 hours. "2 hr" will be displayed on the screen. Choose between 1 and 2 hours by pressing the OVERRIDE button.

The override function operates differently in ON, OFF and AUTO mode. Check the position of the bar cursor to identify the current program mode before override.

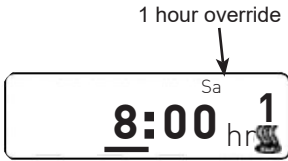



Fig.e

Reverse Override: timer is in ON or OFF status

The ON/OFF status will be reversed if the timer is in ON or OFF mode.

When the timer is in OFF mode*

Once the OVERRIDE button is pressed, the timer will change to the "ON" status. The symbol  will be displayed on the screen. This will switch the unit on during the override period. While the override hour is in operation, a countdown clock will appear on the LCD screen (see Fig.e). At the end of the override period, the timer will revert back to OFF mode.



Countdown clock

Fig.f

When the timer is in ON mode

Once the OVERRIDE button is pressed, the timer will change to the "OFF" status. This will switch the unit off during the override period. While the override hour is in operation, a countdown clock will appear on the LCD screen. At the end of the override period, the timer will revert back to the "ON" mode.

Temporarily ON Override - when the timer is in AUTO mode

Timer will be turned on for the desired override period if the timer is in AUTO mode.

When the preset program mode is in OFF period*

Once the OVERRIDE button is pressed, the timer will change to the "ON" status. While the override hour is in operation, a countdown clock will appear on the LCD screen. The unit will be running in ON mode for set override period. At the end of the override period the program will revert back to the preset program mode.

When the preset program mode is in ON period

The override period will only start when the programmed ON period is completed. While the override hour is in operation, a countdown clock will appear on the LCD screen. At the end of the override period the program will revert back to the preset program mode.

NB: To cancel the override mode, press either the "SEL" or "OVERRIDE" button anytime during the override period.

* This feature complies with the BCA (Building Code of Australia), Section J6.

Troubleshooting

In the event of a fault or failure, isolate power and water. Do not use the appliance. Contact a Birko authorised service agent for assistance, service, spare parts or enquiries.

Symptom	Possible cause	Solution
Fails to dispense water.	Water isolating valve turned off. Blocked filter, blocked meter tube, blocked strainer, jammed ball valve assy, airlock in transfer tube.	Check water supply valve. Contact Birko authorised agent.
Water not boiling.	No power. Faulty PCB, faulty element, faulty cut-out.	Check power supply. Contact Birko authorised agent.
Runs out of boiling water and fails to refill. Outlet tap drips. Overflow from vent. Excessive steam from vent. Power “on” but no heat. Overload repeatedly tripping with excessive steam. Overload repeatedly tripping without excessive steam.	Internal adjustment.	Contact Birko authorised agent.

Spare parts

Item	Kit No	Description
1	1311055	Birko Tap assy TT
2	1311059	Tap Insert Assy Birko
3	1312222	Escutcheon Black TT
4	1312223	Tap Lock Nut (w/ Flats)
5	1312224	Timer Loom Birko TT 5l
6a	1312225	Thermostat EA3513R 88 \pm 1.5
6b	1312226	Thermostat EA3513A 85 \pm 1.5
7a	1312227	Inlet assy 3l
7b	1312228	Inlet assy 5l
7c	1312229	Inlet assy 7.5l
7d	1312230	Inlet assy 15l
7e	1312231	Inlet assy 25l
8	1312232	Filter cold inlet bush (plastic)
9a	1312233	Bush vent assy 3l
9b	1312234	Bush vent assy 5l
9c	1312235	Bush vent assy 7.5l
9d	1312236	Bush vent assy 15l
9e	1312237	Bush vent assy 25l
10	1312238	Loom Birko TT Ther-Overload
11	1315320	Timer 7day-24Hr Gray
12	1312239	Lid, Cistern TT
13	1312240	Jumper Valve Assy
14	1311013	Floating Ball ASSY
15	1311031	Overload 4 terminal, 2 pole, 90 deg
16	1312242	Tank, Cistern
17	1312243	Seal Transfer Tube 2000B
18a	1312255	Metering Tube 1.5kW 3l
18b	1312244	Metering Tube 2.4kW, 5, 7.5, 15 & 25l
19	1312245	Elbow Stem 1/4" x 1/4" JG
20a	1312246	Tank Assy S/S TT 3l
20b	1312247	Tank Assy S/S TT 5l
20c	1312248	Tank Assy S/S TT 7.5l
20d	1312249	Tank Assy S/S TT 15l
20e	1312250	Tank Assy S/S TT 25l
21	1312251	O Ring BS114 Silicone
22a	1312253	Element, 1500 (3l)
22b	1312252	Element 2400/240v (5 & 7.5l)
22c	1312256	Element, 2400 (15 & 25l)

Cleaning



Do not use strong, corrosive or abrasive cleaning materials. Stainless steel surfaces will show scratches if an abrasive cleaning product is used.

Wipe clean the outer surfaces with a sponge or a soft cloth using a mild soap and water.

End of life disposal

In order to help preserve our environment we ask that you dispose of this product correctly. Please contact your local city council for collection centre details.



Birko Heaters Australia Pty Ltd

ABN 39 103 881 625

77 Allingham Street, Condell Park NSW 2200

sales@birkoheaters.com | birko.com.au

As Birko policy is one of continuous product improvement, changes to specifications may be made without prior notice. Images in this booklet have been modified and may not be true representations of the finished goods.

The term "Birko" is a registered trade mark of Birko Heaters Australia Pty Ltd.

© 2020 Birko Heaters (Aust) Pty. Ltd.