

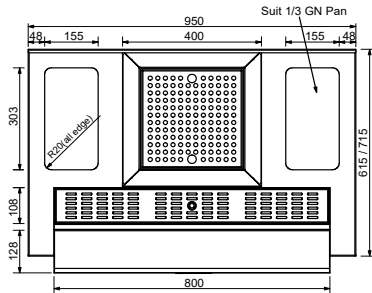
Product Information

- High quality 304 grade stainless steel construction
- Designed to bridge between benches
- 1.2mm thick, no. 4 finish
- Fully insulated stainless steel ice well, removable drip tray
- Includes Speed Rack
- 2 x stainless integrated rod
- Mobile and small cocktail station suits 1/3 GN Pans (pans not included)

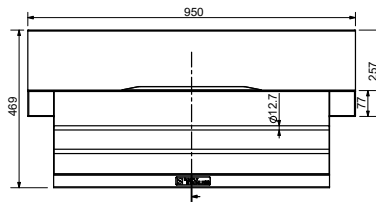


General Drawings

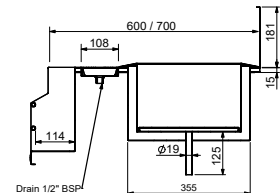
Cocktail Station - Small Ice Well (SBM.CS.0950 / SBM.CS.7.0950)



Plan View

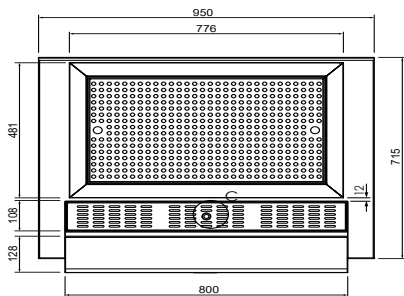


Front View

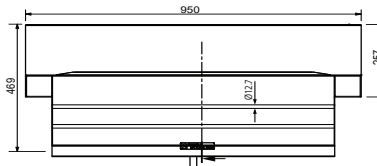


Side View

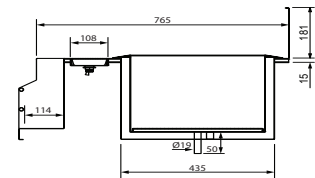
Cocktail Station - Large Ice Well (SBM.CSB.7.0950)



Plan View

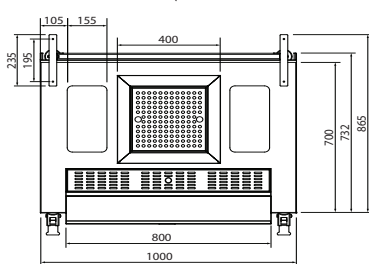


Front View

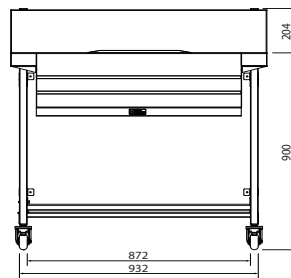


Side View

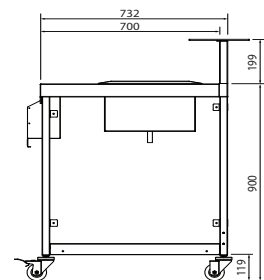
Cocktail Station - Mobile (SBM.CS.7.1000.LG.MOBILE)



Plan View



Front View



Side View

Specifications

Product Code	W x D x H (mm)	Internal Ice Well W x D x H (mm)	Unit Weight (Kg)	Load Capacity (Kg)
SBM.CS.0950	950 x 665 x 469	300 x 300 x 202	19	20
SBM.CS.7.0950	950 x 765 x 469	300 x 300 x 202	21	20
SBM.CSB.7.0950	950 x 765 x 469	380 x 675 x 273	41	20
SBM.CS.7.1000.LG.MOBILE	1000 x 700 x 900	1000 x 865 x 1100	55	20

Due to continuous product research and development, the information contained herein is subject to change without notice.

Revision: B - 26/03/2025 - 05

www.stoddart.com.au